



Redfern Ramblings

Open House Special Edition

OPEN HOUSE
Oct 6 & 7
Sat 10-5, Sun 10-4
BRING YOUR DOG!

A New Home!

On October 1, 2007, Redfern Canines launched its new Training and Education Center at 2271 Paxton Church Road (Brandywine Plaza, across Progress Ave from AAA).

The air-conditioned Center, which is within 15 minutes of much of the Harrisburg area, is located 1 mile north of I-81 exit 69 (Progress Ave). On-site parking is available for more than 100 cars.

The site, which is carpeted and very well-lit, has plenty of room for storage and display space for our training tools.

We look forward to offering an expanded class schedule, with classes available several week-day evenings plus weekends. Some daytime classes may be offered if there is interest.



Look for more Seminars and other special events to be announced in the near future.

For detailed directions see our website at

www.redferncanines.com/location.html

Tools of the Trade: CRATES

The crate is one of the most effective basic needs for every family who has a dog. Among the benefits are

- Provides a safe and secure place for the dog to relax.
- Provides a comfortable space that the dog can call their own.
- Helps to promote housebreaking (most dogs will not soil their own space).
- Controls the movement of the dog while the owner is at work or otherwise out of the house.
- Prevents roaming and getting into mischief when unsupervised.

Dogs are den animals. It is not unusual for dogs to seek out a quiet cave-like space (beneath a table, behind furniture, in a room apart from the crowd) when they want to "get away" or relax.

Dogs who are crate-trained (and are never taught that the crate is punishment or a place of abandonment) will naturally go to their crate area, especially when introduced to the crate early in puppyhood.

To promote use of the crate, try feeding your dog there. Throw a small treat or toy into the crate (*but don't always slam the door behind them*) to make it a positive experience. And make a big fuss over them when they go to, and come out of, their crate.

Can't find Rover? Look in the crate!



Redfern Seminar Series The Power of the Clicker October 13 & 14

\$150 with dog
\$115 without dog

For details on seminar content and registration procedure go to

www.redferncanines.com/seminars.html.

Online payment options include major credit cards and PayPal.

Late-Breaking News

Redfern Canines has just received notice of acceptance into membership in **The Labrador Retriever Club**. Membership is limited to those who are recognized as adhering to high standards as Lab breeders, and who subscribe to their Code of Ethics

CGC/TDI Evaluations

October 6

By Pre-Registration only,
call **717-805-1310**
additional info at
www.redferncanines.com

Expanded Fall Classes begin October 16

Details on Page 2 and our Web Site

Problem Clinic — CHEWING

Dogs chew! It's part of their nature and they do it for entertainment. Puppies do it when they're teething. It's fun. It feels good. It is NOT something that can be prevented.

But it can be managed.

Our dogs need to be provided opportunities to chew APPROPRIATE things, and given alternatives and distractions when their chewing turns to Inappropriate objects.

If your dog is a marathon chewer, be sure to provide adequate quantities of things like Nylabones, hard rubber toys such as Kongs, Busy Buddies and Tug-a-Jugs, and appropriately-sized real bones that will not splinter or break up when chewed aggressively.

It's also critical to "puppy-proof" the areas where the dog spends time. Get down on the dog's level to see what might be attractive to them and remove it before they can sink their teeth into it. An ounce of prevention really IS worth a pound of cure!

It's **NOT** a MUZZLE!

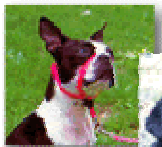
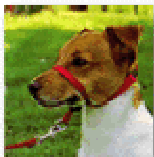
The Gentle Leader® Headcollar is one of the most effective and humane tools available to help control pulling, jumping and barking.

It works much the same as a horse halter, by directing a pulling dog's energy away from the direction of the pull. The mouth can open fully for eating, drinking &, panting.

Available in a variety of sizes and colors, at classes or at

www.redferncanines.com/trainingaids.html

**Gentle Leader®
Headcollar**



Fall Training Classes begin October 16

With our new facility we are able to expand our offerings to a broad selection of Classes, Seminars and Special Events. There is something for everyone, at your dog's level, and on a variety of days and evenings to fit your dog's schedule.

Class Title	Beginning Date/Time	# Sessions
Rally Obedience -- Level 1	October 16 (Tues) 6:30 PM	6
Rally Obedience -- Level 2	October 16 (Tues) 7:45 PM	6
Reliable Recalls	October 17 (Weds) 6:30 PM	4
Obedience Competition -- Level 1	October 17 (Weds) 7:45 PM	6
Beginner Obedience	October 18 (Thurs) 6:30 PM	6
CGC/TDI Preparation	October 18 (Thurs) 7:45 PM	5
Agility -- Level 1	October 26 (Fri) 6:30 PM	6
Agility -- Level 2	October 26 (Fri) 7:45 PM	6
Puppy Class	October 27 (Sat) 9:30 AM November 12 (Mon) 6:30 PM	6
Loose Leash Walking	October 27 (Sat) 10:45 AM	4
Kids 'n K9s	October 28 (Sun) 1 PM	6
Conformation Preparation	October 28 (Sun) 2:30 PM	6
Manners Class	November 12 (Mon) 7:45 PM	6
K9 Sampler	November 29 (Thurs) 7:45 PM	5
Tricks Class	December 6 (Thurs) 6:30 PM	4
Attention Class	December 7 (Fri) 6:30 PM	3

For full Class Schedule, Class Descriptions, Registration Information and Online Payment options go to www.redferncanines.com

Special Events

Mark your calendar NOW and plan to attend the following special events:

- **Halloween Party**
Oct 27 (Sat) 3 PM
- **Games Night**
Nov 5 (Mon) 7 PM
- **Holiday Party**
Dec 8 (Sat) 10 AM

Additional information will be announced soon at classes and on the website.

Suggestions Welcome

Have a subject you'd like to see included in a future edition of Redfern Ramblings? Send your ideas to ramblings@ioweb.com

Redfern Therapy Dog Group

The inaugural meeting of the Redfern Therapy Dog Group will be held November 7 (Weds) at 7 PM. The group will provide support and resources for dog and handler teams who participate in Therapy Dog activities. Look for more information to come soon.

Training Aids Available

Redfern has high-quality training Aids and Toys available, at prices below retail. Included are

- ↪ Tethers (steel — "un-chewable")
- ↪ "Gentle Leader®" head halters & "Easy-Walk®" no-pull harnesses
- ↪ Treat Pouches & i-Click Clickers
- ↪ Ultimate Puppy Toolkits®
- ↪ Leather & Cotton Leads
- ↪ Premier Collars
- ↪ Busy Buddy®, Bouncy Bone™, Squirrel Dudes, Waggle™ & Tug-a-Jug™ toys

Pictures and prices are available at www.redferncanines.com. Items available at classes, or send an Email to redfern@ioweb.com